

# 18 SEVENTY CABINETS

Natural /White Shaker



## DESIGNER SERIES

Product Catalog

[www.nisbetbrower.com](http://www.nisbetbrower.com)

INTRODUCING OUR VERY OWN

## Designer Collection

Presenting Nisbet Brower's exclusive Designer Collection—a refined selection of cabinetry thoughtfully crafted to elevate kitchens and bathrooms with timeless beauty and exceptional quality. Constructed with durable plywood, this collection offers both strength and sophistication, ensuring a long-lasting foundation for any space. The Designer line features an array of paint and stain options, allowing for personalized design that complements any style. The wide and slim rail door styles provide versatility, from classic to contemporary aesthetics, while the beautiful satin finish enhances the cabinetry's rich, smooth appeal. Thoughtfully engineered for everyday convenience, this collection includes soft-close doors and drawers, full-extension guides, and dovetail wood drawer boxes, merging luxury with functionality. At Nisbet Brower, we are dedicated to crafting cabinetry that seamlessly blends style, durability, and innovation. The Designer Collection embodies this commitment, offering a perfect balance of elegance and performance to transform any home. Experience superior craftsmanship with a cabinetry line designed to inspire.

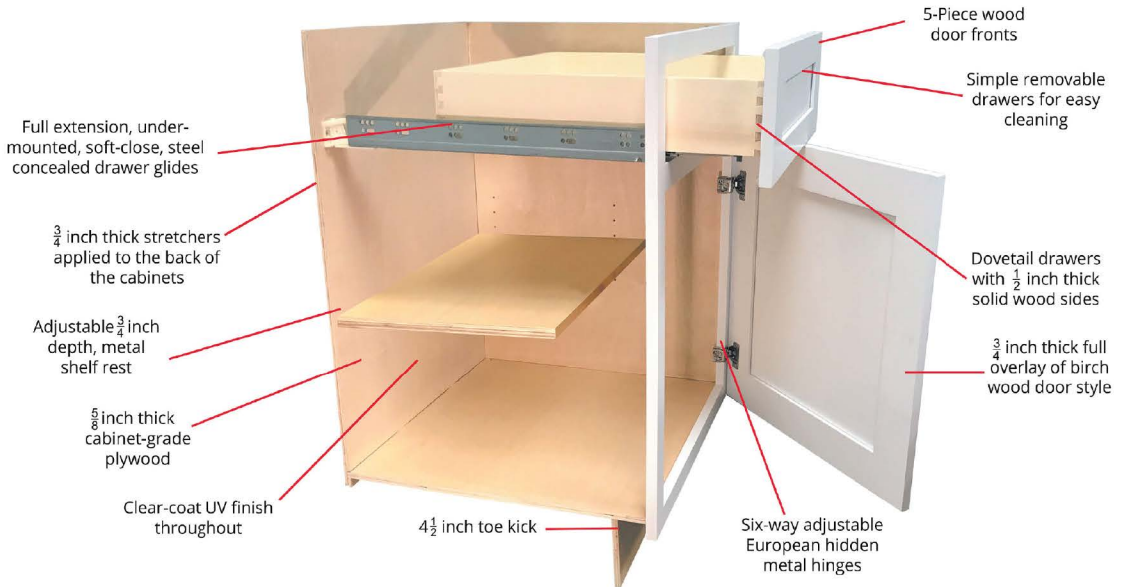


### Designer Construction

18 Seventy is built to last. It is manufactured to precise standards using all plywood construction. All hinges and drawer glides are fully adjustable and utilize soft close technology for a luxury look and feel.



Plywood Construction



### Features

**Wood:**

Painted High Density Fiberboard (HDF) or Stained Birch Full overlay door panel, 3/4" thick door panel

**Door Panel:**

Recessed door style, reversed raised door panel on the back. Painted surfaces are made of HDF.

**Drawer:**

5/8" thick cabinet grade plywood sides with full extension, under-mounted, soft-close, steel concealed drawer glides.

**Box:**

1/2" thick cabinet grade plywood with metal L-bracket reinforcements for base cabinets.

**Hardware:**

6-way adjustable 1 1/4" hinge with soft closing insert.

**Shelf:**

Quarter-depth, adjustable 3/4" thick cabinet grade plywood, metal shelf rests.

**Interior:**

Natural Clear Coat Finish.



## WHITE SHAKER

There's a reason our white shaker cabinets are one of the most popular options for homes. Whether you place an emphasis on traditional style or getting value for money, our white shaker cabinets are a great choice.

Paint



## GREY SHAKER

Another classic and still a popular option, our Grey Shaker cabinets are still the go to choice for many home kitchens and bathrooms across America. Once again, the real charm of this style of cabinet lies in its light, easy on the eye finish and simple yet stylish design.

Paint



## BLUE SHAKER

Subtle yet stylish. That's really the best way to describe one of our newest shaker cabinet options - Blue Shaker. The deep tone of the finish means that these cabinets provide a truly classic feeling that's perfect for any bathroom or kitchen.

Paint



## ONYX SHAKER

Whether you place an emphasis on traditional style or getting value for money, our onyx shaker cabinets are a great choice. Their simple finish and design provides a seamless blend, making them perfect for any space or décor.

Paint



## NATURAL SHAKER

With their warm, timeless wood finish, they bring a touch of nature indoors while offering the clean lines of a shaker style. Perfect for those who value classic design and natural beauty, our Natural Shaker cabinets are a versatile choice for any home.

Stain



## SLATE SHAKER

The dark tone and stylish overlay epitomize what contemporary home design can be. Although this is a large part of the appeal, our Slate Shaker Cabinets are designed with more than simply style in mind.

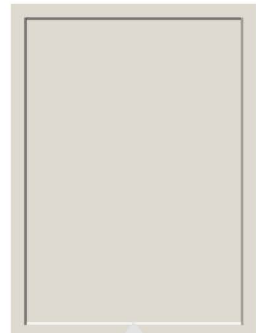
Stain



## SLIM SAGE GREEN

With their fresh, calming hue and sleek profile, they effortlessly blend timeless style with contemporary design, making them perfect for adding a touch of sophistication to any space.

Paint



## SLIM DOVE WHITE

With their sleek, modern design and soft white hue, they offer timeless elegance that complements any style, all while delivering exceptional quality and value.

Paint







## White Shaker

5 piece shaker door with 3" stiles & rails, and 3/8" panel,  
(2" rails are applied for insufficient height drawer fronts)  
Painted High Density Fiberboard.



## Grey Shaker

5 piece shaker door with 3" stiles & rails, and 3/8" panel,  
(2" rails are applied for insufficient height drawer fronts)  
Painted High Density Fiberboard.







## Natural Shaker

5 piece shaker door with 3" stiles & rails, and 3/8" panel, (2" rails are applied for insufficient height drawer fronts) Stained Birch.



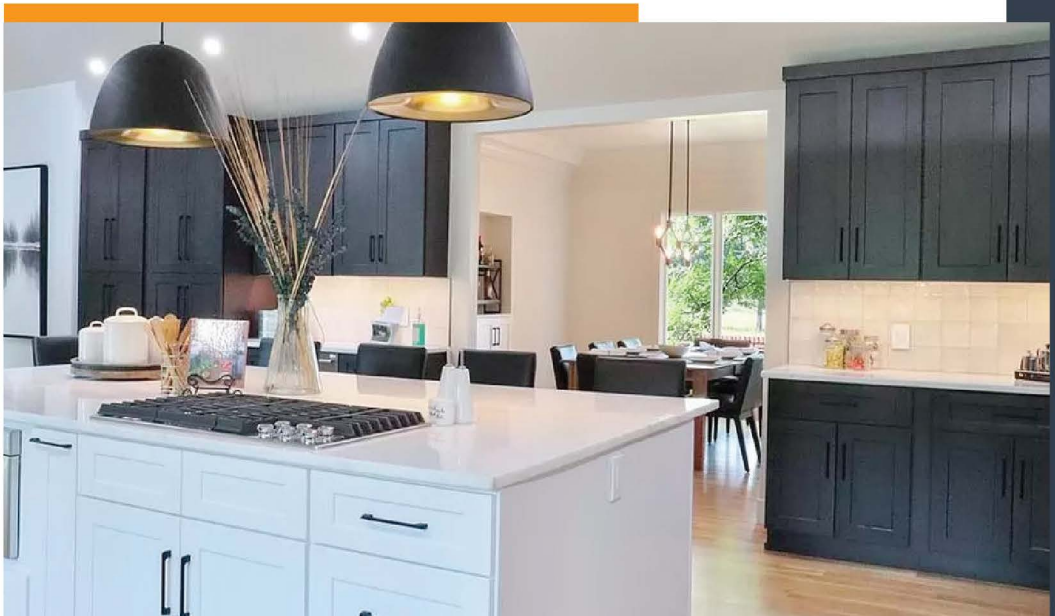
## Slate Shaker

5 piece shaker door with 3" stiles & rails, and 3/8" panel, (2" rails are applied for insufficient height drawer fronts) Stained Birch.





Slim Sage Green Framed



Slate/White Shaker Framed

Onyx Shaker Framed



Onyx Shaker Framed



Blue Shaker Framed



Grey Shaker Framed





White Shaker Framed



White/Grey Shaker Framed

## Get In Touch With Us!



513-563-1111



[www.nisbetbrower.com](http://www.nisbetbrower.com)



**Nisbet Brower** Lumber & Building Center

11575 Reading Road, Cincinnati, OH 45241

**Nisbet Brower** Kitchen & Bath Showroom

10801 Reading Road, Cincinnati, OH 45241

# 18 SEVENTY CABINETS



[www.nisbetbrower.com](http://www.nisbetbrower.com)